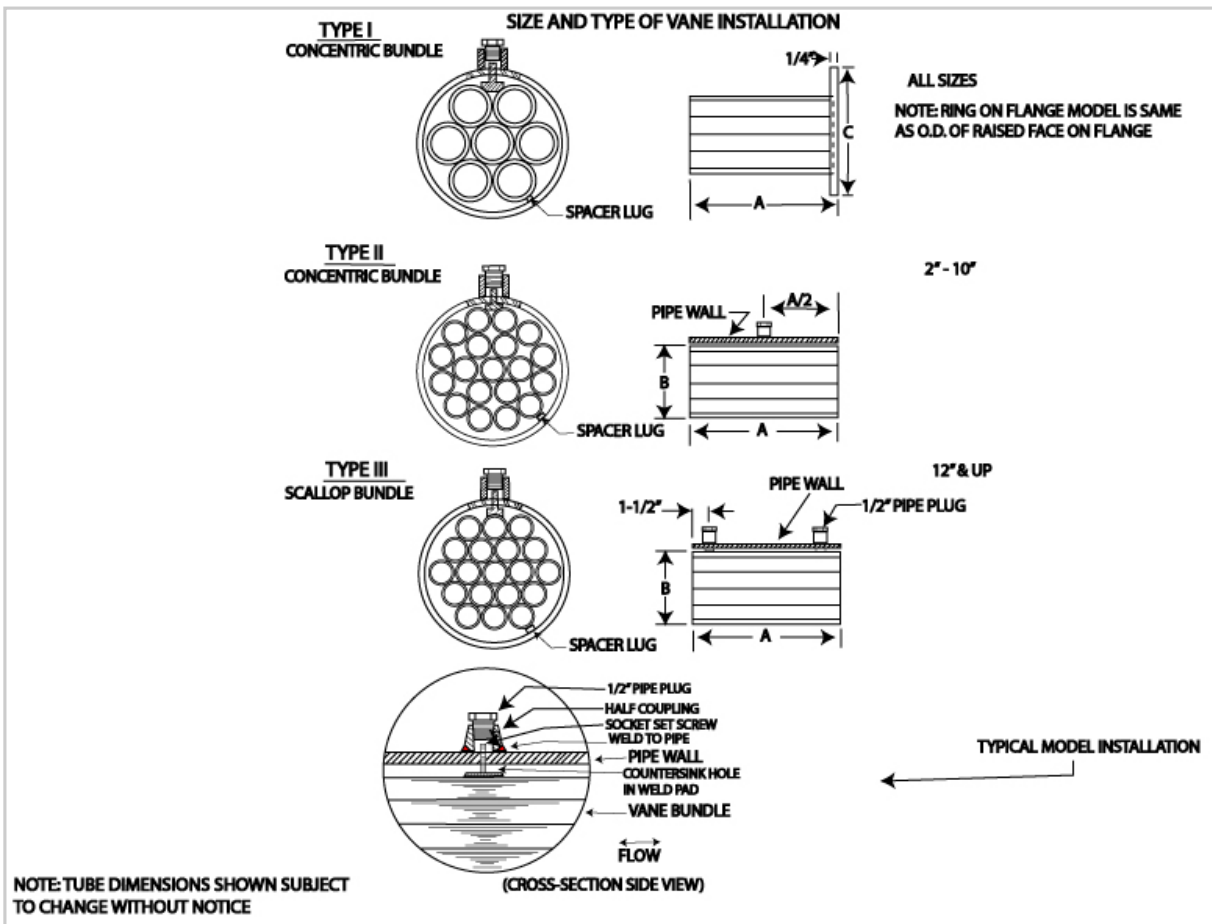


Straightening Vane

Offering Straightening Vanes for installation in any application where non-turbulent flow is necessary for accurate flow measurement. A straightening vane is installed upstream of the metering section ensuring a smooth flow and a more accurate, consistent flow profile.



Straightening Vane

Line Size	Type of Vane	Line I.D.	Length of Vane	O.D. of Vane	O.D. of Tubes	Wall Thickness of Tubes	No. of Tubes	Line Model No. & size of screws	Approximate Weights		Fig. O.D.
									Flange Model LBS.	Line Model LBS.	
			A	B	D	E				C	
2"	I	2.067"	6"	1-31/32"	21/32"	0.095"	7	1-3/8" x 3/4"	3	2	3-5/8"
2"	I	1.939"	6"	1-29/32"	21/32"	0.095"	7	1-3/8" x 3/4"	3	2	3-5/8"
3"	II	3.068"	8"	2-7/8"	19/32"	0.049"	19	1-3/8" x 3/4"	4	3	5"
3"	II	2.900"	8"	2-3/4"	9/16"	0.049"	19	1-3/8" x 3/4"	8	7	5"
4"	II	4.026"	10"	3-31/32"	13/16"	0.049"	19	1-3/8" x 3/4"	8	7	6-3/16"
4"	III	3.826"	10"	3-3/4"	3/4"	0.049"	19	1-3/8" x 1"	8	7	6-3/16"
5"	II	5.047"	12"	4-27/32"	1"	0.049"	19	1-1/2" x 1"	11	9	7-5/16"
6"	II	6.065"	12"	5-15/16"	1-7/32"	0.049"	19	1-1/2" x 1"	21	19	8-1/2"
6"	II	5.761"	12"	5-5/8"	1-5/32"	0.049"	19	1-1/2" x 1"	21	19	8-1/2"
8"	II	7.625"	16"	7-15/32"	1-1/2"	0.065"	19	1-1/2" x 1"	37	35	10-5/8"
8"	II	7.981"	16"	7-29/32"	1-5/8"	0.065"	19	1-1/2" x 1"	37	35	10-5/8"
10"	III	10.136"	20"	10"	2"	0.083"	19	1-1/2" x 1"	57	54	12-3/4"
10"	II	10.020"	20"	9-3/4"	2"	0.083"	19	1-1/2" x 1"	57	54	12-3/4"
12"	III	12.090"	24"	11-7/8"	2-3/8"	0.083"	19	2-1/2" x 1-1/4"	81	77	15"
12"	III	11.374"	24"	11-1/4"	2-1/4"	0.095"	19	2-1/2" x 1-1/4"	81	77	15"
12"	II	11.938"	24"	11-5/8"	2-3/8"	0.083"	19	2-1/2" x 1-1/4"	81	77	15"
14"	III	13.250"	28"	13-1/8"	2-5/8"	0.083"	19	2-1/2" x 1-1/4"	105	100	16-1/4"
14"	II	13.000"	28"	13-3/4"	2-5/8"	0.083"	19	2-1/2" x 1-1/4"	105	100	16-1/4"
16"	III	15.250"	30"	15"	3"	0.188"	19	2-1/2" x 1-1/4"	274	268	18-1/2"
16"	II	15.500"	30"	14-19/32"	3"	0.188"	19	2-1/2" x 1-1/4"	274	268	18-1/2"
18"	II	16.876"	36"	16-23/32"	3-7/16"	0.188"	19	2-1/2" x 1-1/4"	386	378	21"
20"	II	19.250"	40"	18-27/32"	3-7/8"	0.188"	19	2-1/2" x 1-1/4"	477	468	23"
24"	II	23.250"	48"	23-1/8"	4-3/4"	0.188"	19	2-1/2" x 1-1/4"	704	693	27-1/4"
26"	III	25.250"	52"	25"	5"	0.188"	19	2-1/2" x 1-1/4"	814	796	29-1/2"
30"	III	29.250"	60"	28-3/4"	5-3/4"	0.188"	19	2-1/2" x 1-1/4"	1295	1273	33-3/4"
34"	II	33.250"	68"	32-13/16"	6-3/4"	0.250"	19	2-1/2" x 1-1/4"	1880	1860	38"
36"	III	35.250"	72"	35"	7"	0.188"	19	2-1/2" x 1-1/4"	1582	1860	40-1/4"